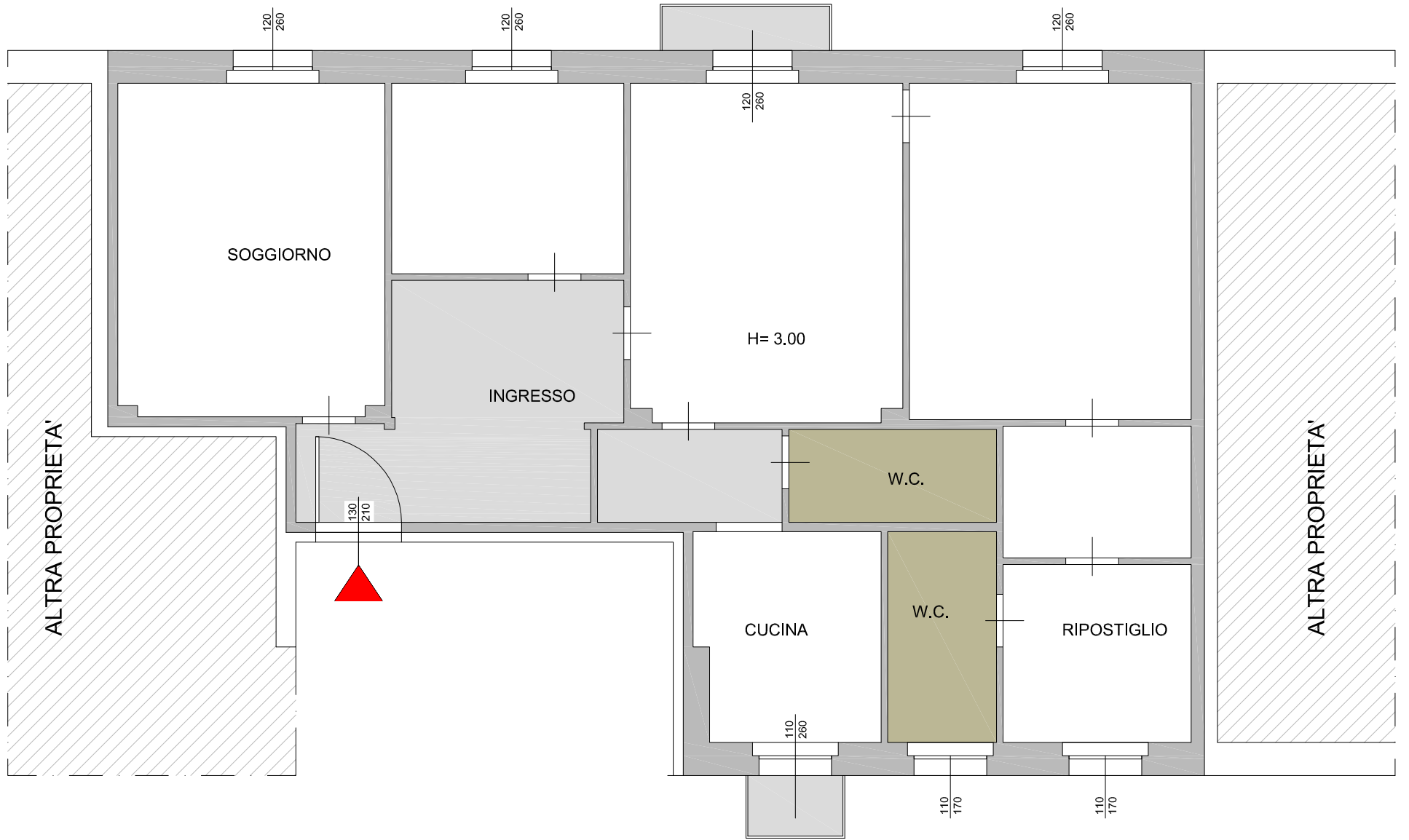


# PIANO SECONDO (STATO ATTUALE)

SUP. COMMERCIALE RESIDENZA= mq. 146.35

SUP. COMMERCIALE BALCONI = mq. 3.25



# PIANO SECONDO (PROGETTO)

SUP. COMMERCIALE RESIDENZA= mq. 146.35

SUP. COMMERCIALE BALCONI = mq. 3.25

